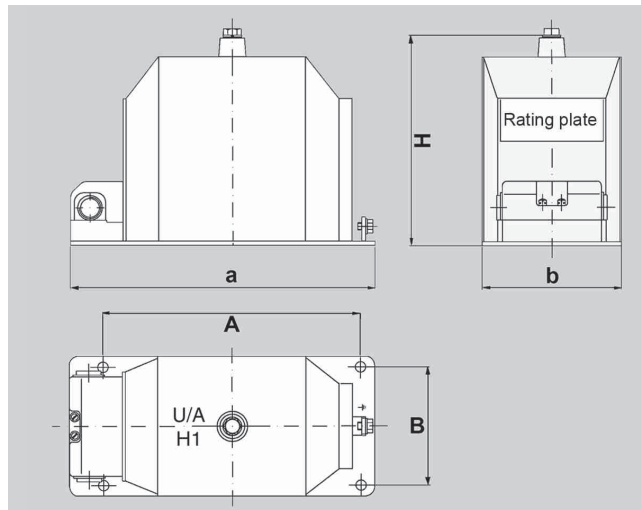




# VES

## Voltage Transformer Indoor

VES 12 | 17,5 | 24



| TYPE VES Dimensions mm |        |          |        |
|------------------------|--------|----------|--------|
|                        | VES 12 | VES 17,5 | VES 24 |
| A                      | 270    | 270      | 280    |
| B                      | 125    | 125      | 150    |
| a                      | 320    | 320      | 354    |
| b                      | 148    | 148      | 178    |
| H                      | 220    | 220      | 280    |

| TYPE VES  |     |    |                                      |                                      |                                      |
|---|-----|----|--------------------------------------|--------------------------------------|--------------------------------------|
|   |     |    | VES 12                               | VES 17,5                             | VES 24                               |
| $U_m$   |     | kV | 12                                   | 17,5                                 | 24                                   |
| Test voltages                                   |     | kV | 28   28   75                         | 38   38   95                         | 50   50   125                        |
| Rated Primary Voltage – $U_{PN}$                |     | V  | $10000/\sqrt{3}$<br>$11000/\sqrt{3}$ | $13800/\sqrt{3}$<br>$15000/\sqrt{3}$ | $20000/\sqrt{3}$<br>$22000/\sqrt{3}$ |
| Rated Secondary Voltage – $U_{SN}$              |     | V  | $100/\sqrt{3}$   $110/\sqrt{3}$      |                                      |                                      |
| Rated Secondary Voltage for the Earthing Corens |     | V  | $100/3$   $110/3$                    |                                      |                                      |
| Rated Output in Accuracy Class (IEC)            | 0,2 | VA | 20                                   | 20                                   | 20                                   |
|   | 0,5 | VA | 50                                   | 50                                   | 50                                   |
|   | 1,0 | VA | 100                                  | 100                                  | 100                                  |
| Thermal Limit Current                           |     | A  | 6                                    | 9                                    | 9                                    |
| Thermal Limit Current at $1,9 \times U_N / 8h$  |     | A  | 6                                    | 6                                    | 6                                    |
| Frequency                                       |     | Hz | 50   60                              |                                      |                                      |
| Weight  |     | kg | 19                                   | 19                                   | 27                                   |

Subject to Technical Changes



GERMANY HAMBURG • WIRGES • KIRCHAICH • DRESDEN  
AUSTRIA MARCHTRENK | HUNGARY KECSKEMÉT | CHINA SHANGHAI | USA LAVONIA

