

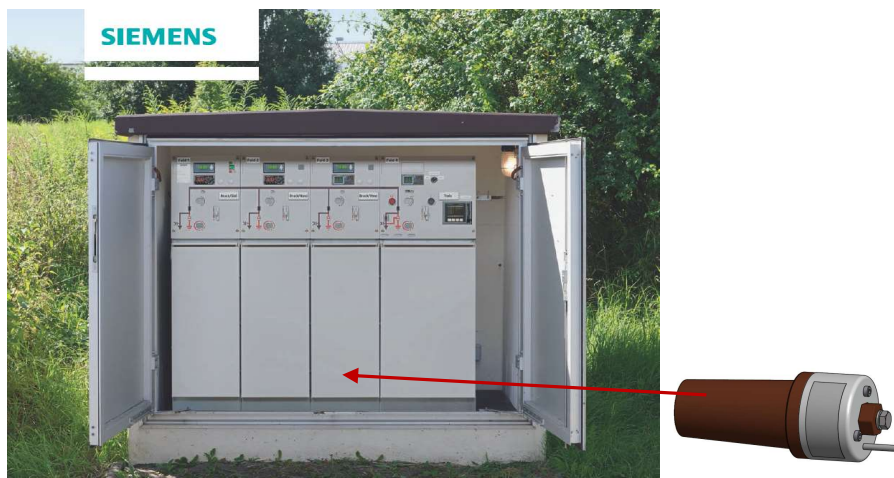
Voltage sensor MGTK 12/24



- Medium voltage application up to $U_m = 24$ kV
- Suitable for harmonic measurement up to 2.5 kHz

Application areas

Due to their compact design, the voltage sensors are ideal for installation in local network stations or switchgear, either when these are being newly equipped or retrofitted.



Source: siemens.com

Description

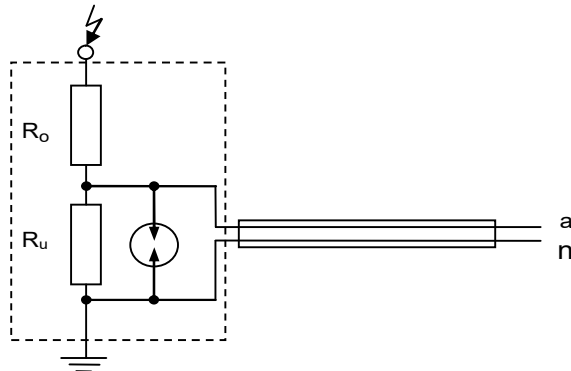


Figure 1: Compact resistive voltage divider with overvoltage surge protector

Specification (example – further data on request)

General data	
Standards	IEC 60044-7 (coming soon: IEC 61869-11)
Environmental conditions	
Storage	-40 to +80 °C
Operation	-25 to +55 °C
Class of insulation material	E
Primary connection	C1 cone according to DIN EN 50181 Maximum tightening torque 30 Nm
Secondary connection	LiYCY-OB, M8 socket 3-pin (0,2m) <u>expandable</u> with M8 plug 3-pin (1,5m or 3,5m)
Cable plug	e.g. Nexans (K) 440TB
Electrical data	
Insulation level	24/50/125 kV (12/28/75 kV, 17.5/38/95 kV)
Primary voltage	20 kV/ $\sqrt{3}$ (10 kV/ $\sqrt{3}$, 15 kV/ $\sqrt{3}$)
Secondary voltage	3.25 V/ $\sqrt{3}$
Voltage factor	1.2 U _{pr} continuous; 1.9 U _{pr} / 8 h
Frequency	50/60 Hz
Rated load impedance	200 kΩ ± 1 %, cos(β) = 1
Accuracy class	0.5 / 3P; other values on request
Voltage measurement error at 2.5 kHz	±10 %

Contact: Frank Karschau, Ritz Instrument Transformers GmbH,
tel. +49 35205 62-212